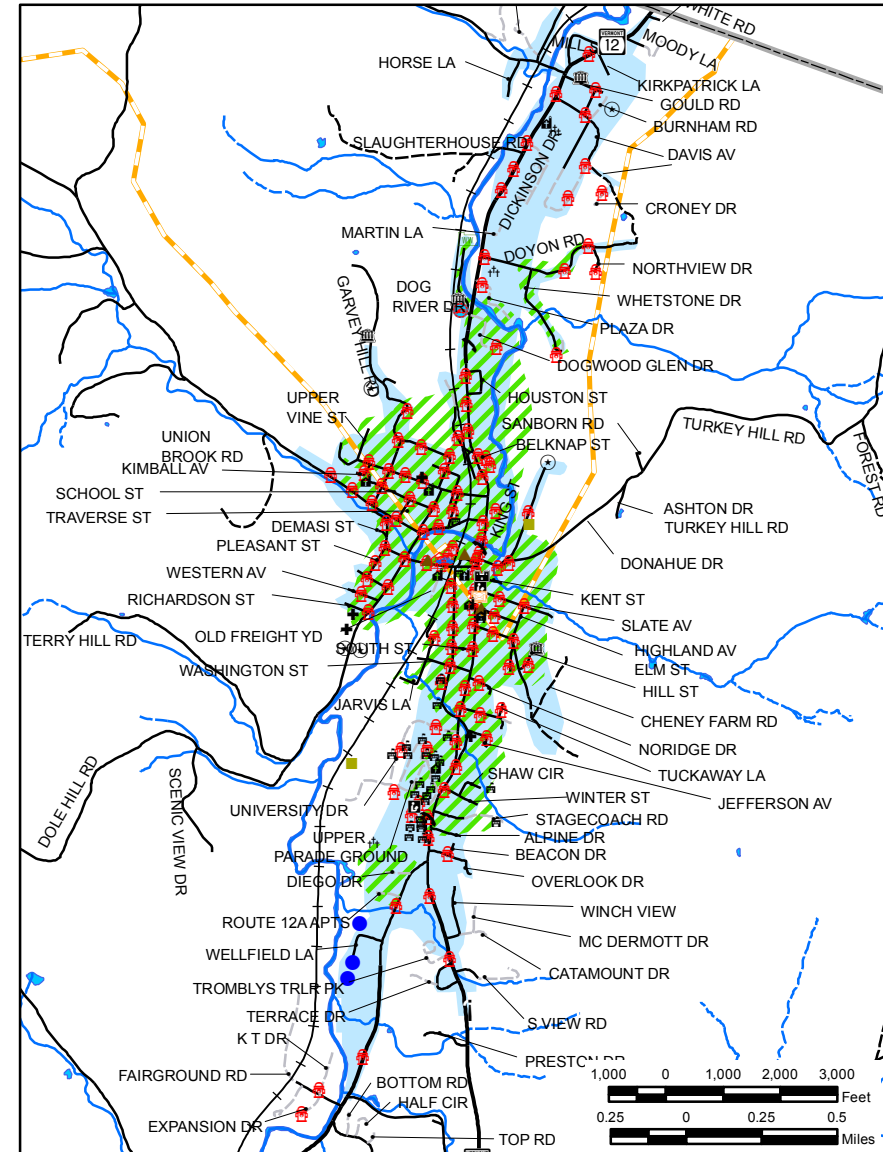
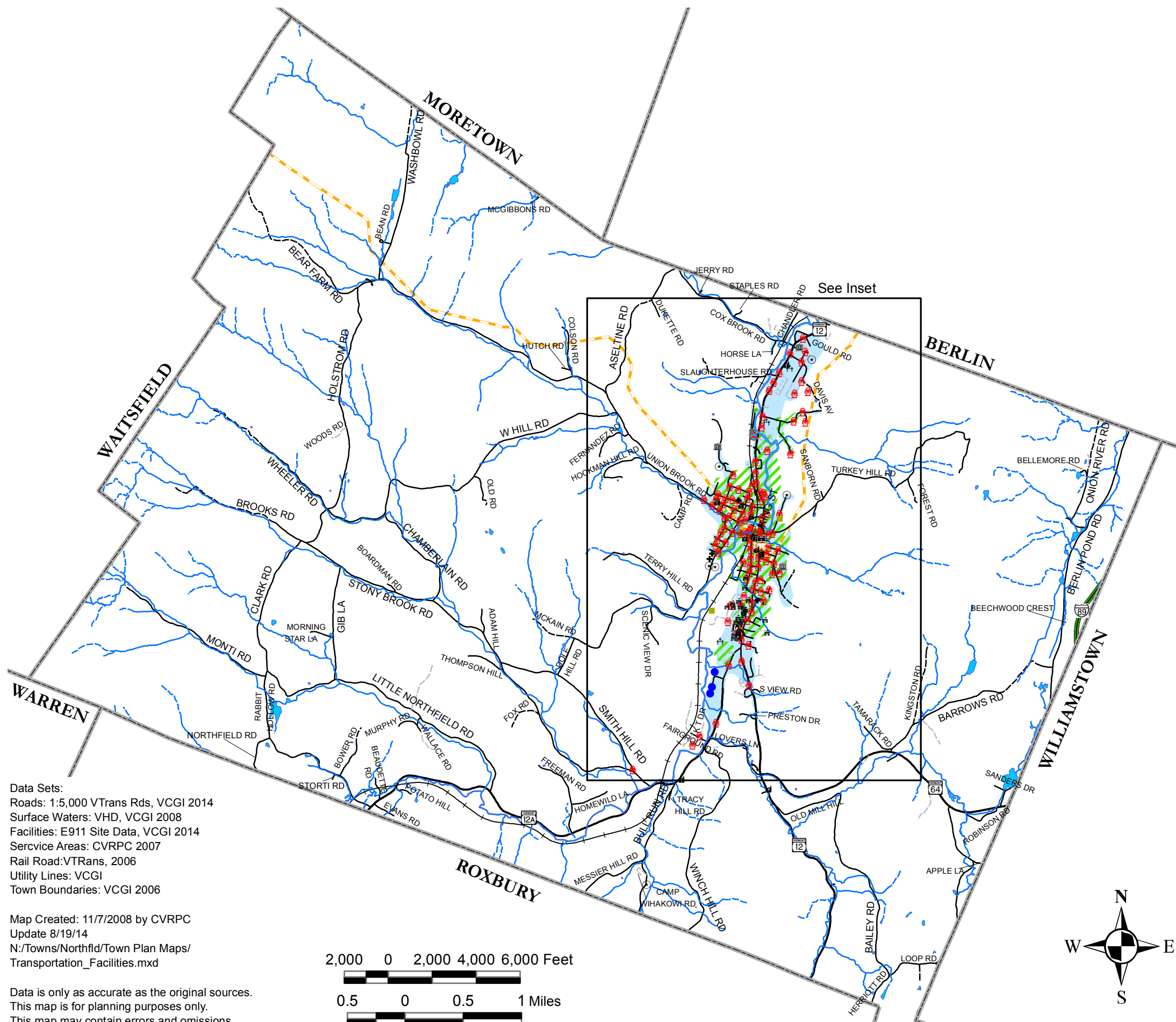


# Town of Northfield: Transportation and Community Facilities

Inset



**Legend**

<b>Community Facilities</b>	—+— Rail Road Lines
● AMBULANCE SERVICE	— Utility Lines
⛦ CEMETERY	▨ Sewer Service Area
Ⓜ CITY / TOWN HALL	■ Water Service Area
Ⓜ COLLEGE / UNIVERSITY; EDUCATIONAL	<b>Roads</b>
▲ CULTURAL	— Town Highways Class 1-3
🚒 FIRE STATION	- - - Class 4 and Unidentified Corridors
Ⓜ GOVERNMENT	- - - Private
⛆ HEALTH CLINIC	— Vermont State Highways
Ⓜ HOUSE OF WORSHIP	— Interstate
🚓 LAW ENFORCEMENT	
📮 POST OFFICE	
⊙ PUBLIC GATHERING	
📞 PUBLIC TELEPHONE; UTILITY POLE W/PHONE	
● PUBLIC WATER SUPPLY WELL	
Ⓜ SUBSTATION	
🏠 WASTEWATER TREATMENT PLANT	
🚒 FIRE HYDRANTS	

Data Sets:  
 Roads: 1:5,000 VTrans Rds, VCGI 2014  
 Surface Waters: VHD, VCGI 2008  
 Facilities: E911 Site Data, VCGI 2014  
 Service Areas: CVRPC 2007  
 Rail Road: VTrans, 2006  
 Utility Lines: VCGI  
 Town Boundaries: VCGI 2006

Map Created: 11/7/2008 by CVRPC  
 Update 8/19/14  
 N:/Towns/Northfld/Town Plan Maps/  
 Transportation\_Facilities.mxd

Data is only as accurate as the original sources.  
 This map is for planning purposes only.  
 This map may contain errors and omissions.

